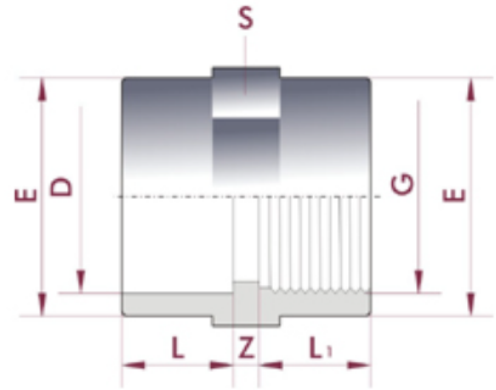
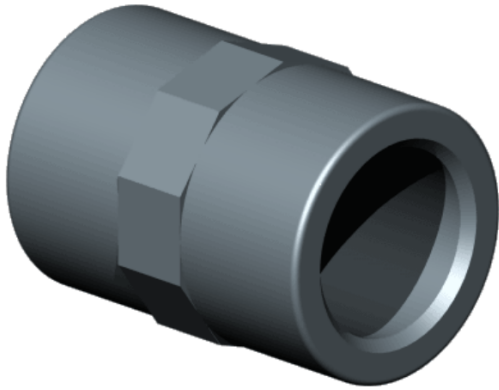


Socket Metric Solvent Cement Female BSP



D X G	Part Number	DN (mm)	PN (bar)	L (mm)	L1 (mm)	Z (mm)	E (mm)	S (mm)
16 x 3/8"	133016	12	10	14	14	3	22	22
20 x 1/2"	133020	15	10	16	14	3	28	27
25 x 3/4"	133025	20	10	19	16	3	34	33
32 x 1"	133032	25	10	22	19	3	43	41
40 x 1 1/4"	133040	32	10	26	20	3	54	50
50 x 1 1/2"	133050	40	10	31	20	3	63	61
63 x 2"	133063	50	10	38	24	3	78	75
75 x 2 1/2"	133075	65	10	44	44	4	90	90
90 x 3"	133090	80	10	51	51	6	108	108
110 x 4"	133110	90	10	61	61	6	135	135