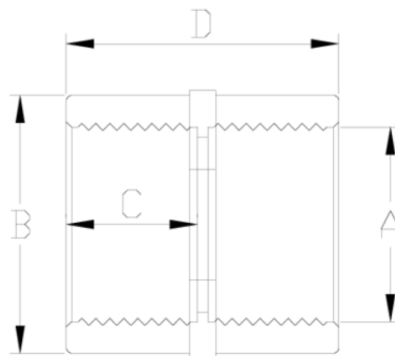


## Socket Female BSP



Part Number	Description	Net Weight	Volume	Gross Weight
122020	Socket 1/2"	0.016	0.00473	1.71
122025	Socket 3/4"	0.022	0.00892	2.42
122032	Socket 1"	0.043	0.00892	3.19
122040	Socket 1 1/4"	0.066	0.02244	5.45
122050	Socket 1 1/2"	0.110	0.03682	11.54
122063	Socket 2"	0.192	0.04717	15.06
122075	Socket 2 1/2"	0.229	0.04717	11.64
122090	Socket 3"	0.445	0.03682	11.24
122110	Socket 4"	0.551	0.04460	9.55



Part Number	A	Weight (g)	B	C	D	PN	Thread
122020	1/2"	18	27	16	35	PN10	BSP
122025	3/4"	27	33	19	41	PN10	BSP
122032	1"	44	41	22	47	PN10	BSP
122040	1 1/4"	72	50	26	55	PN10	BSP
122050	1 1/2"	110	61	31	65	PN10	BSP
122063	2"	169	75	38	79	PN10	BSP
122075	2 1/2"	297	90	44	92	PN10	BSP
122090	3"	503	108	51	107	PN10	BSP
122110	4"	632	131	61	128	PN10	BSP