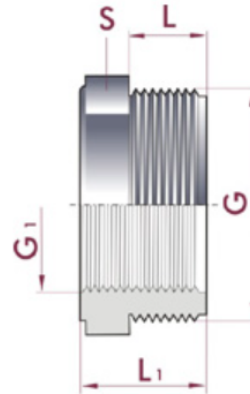
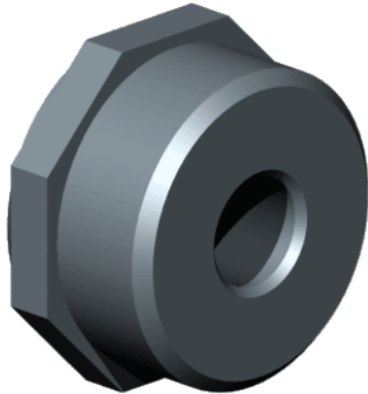


Reducing Bush Male BSP Female BSP



G X G1	Part Number	DN (mm)	PN (bar)	L (mm)	L1 (mm)	S (mm)
1/2" x 1/4"	129019	7	10	12	12	27
3/4" x 1/2"	129020	15	10	16	30	32
3/4" x 1/4"	129023	7	10	16	12	32
1" x 3/4"	129025	20	10	19	34	36
1" x 1/4"	129031	7	10	12	19	36
1 1/4" x 1"	129032	25	10	21	36	46
1 1/2" x 1 1/4"	129050	32	10	21	36	55
2" x 1 1/2"	129063	40	10	26	42	65
2 1/2" x 2"	129074	50	10	30	47	80
3" x 2 1/2"	129075	63	10	33	51	93
4" x 3"	129110	75	10	39	64	120