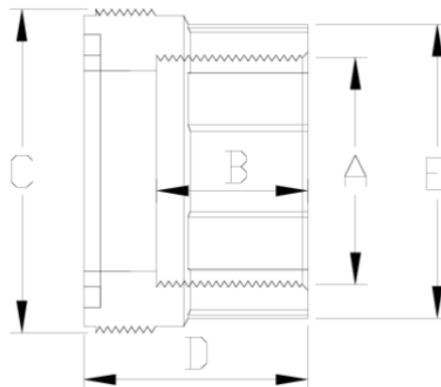


## 3 Piece Union Female BSP



Part Number	Description	Net Weight	Volume	Gross Weight
127020	1/2" PVC Threaded Union	0.013	0.00473	0.25
127025	3/4" PVC Threaded Union	0.022	0.00473	0.35
127032	1" PVC Threaded Union	0.032	0.00473	0.43
127040	1 1/4" PVC Threaded Union	0.056	0.00473	0.68
127050	1 1/2" PVC Threaded Union	0.081	0.00473	0.93
127063	2" PVC Threaded Union	0.130	0.00473	1.41
127075	2 1/2" PVC Threaded Union	0.242	0.01553	2.68
127090	3" PVC Threaded Union	0.428	0.01553	2.83
127110	4" PVC Threaded Union	0.588	0.02244	2.78



Part Number	A	Weight	B	C	D	E	PN	Thread
127020	1/2"	13	16	33	28	28	PN10	BSP
127025	3/4"	24	19	42	29	36	PN10	BSP
127032	1"	32	22	48	32	42	PN10	BSP
127040	1 1/4"	65	26	59	41	52	PN10	BSP
127050	1 1/2"	92	31	66	46	59	PN10	BSP
127063	2"	131	38	78	56	73	PN10	BSP
127075	2 1/2"	230	44	89	61	85	PN10	BSP
127090	3"	420	48	122	69	113	PN10	BSP
127110	4"	625	55	145	79	134	PN10	BSP