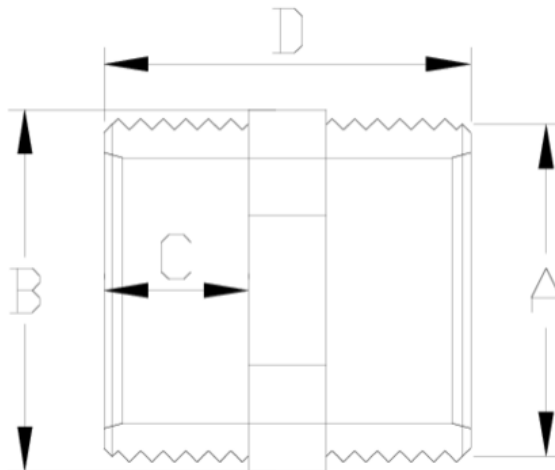


Hexagon Nipple Male BSP



Product Number	Description	Net Weight	Volume	Gross Weight
123020	Hexagon Nipple 1/2"	0.014	0.00472	1.49
123025	Hexagon Nipple 3/4"	0.020	0.00892	2.19
123032	Hexagon Nipple 1"	0.040	0.01553	4.33
123040	Hexagon Nipple 1 1/4"	0.054	0.02244	5.88
123050	Hexagon Nipple 1 1/2"	0.071	0.02244	7.54
123063	Hexagon Nipple 2"	0.125	0.02244	6.74
123075	Hexagon Nipple 2 1/2"	0.171	0.03129	5.71
123090	Hexagon Nipple 3"	0.24	0.01553	2.89
123110	Hexagon Nipple 4"	0.41	0.01553	2.79



Product Number	A	Weight (g)	B	C	D	PN	Thread
123020	1/2"	14	29	11	40	PN10	BSP
123025	3/4"	21	34	16	44	PN10	BSP
123032	1"	37	44	19	50	PN10	BSP
123040	1 1/4"	54	50	21	55	PN10	BSP
123050	1 1/2"	71	60	22	57	PN10	BSP
123063	2"	108	70	26	65	PN10	BSP
123075	2 1/2"	175	80	31	75	PN10	BSP
123090	3"	320	108	33	81	PN10	BSP
123110	4"	510	135	38	91	PN10	BSP